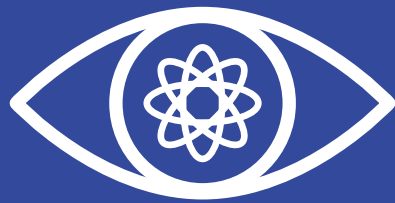


# OUR HEALTH, SAFETY, SECURITY & ENVIRONMENT (HSSE) COMMITMENT

Power-Packer is a subsidiary of the US based CentroMotion™. Power-Packer develops and manufactures hydraulic drive systems for the automotive, truck, marine, agriculture and the medical market.

We are specialized in the production of motion control systems for customers on a global basis including OEM's and Tier 1's in diverse end-markets. Power-Packer Europe is ISO/TS certified and renowned car and truck manufactures are among our customers.

We are committed to the safety, security and health of our people along with the safety and protection of the facilities, communities and environment in which we operate. Everyone who works for Power-Packer and its subsidiaries across the globe has a responsibility for HSSE.



## OUR HSSE VISION

Create a safe, secure and healthy workplace with a minimal impact on the environment in support of the overall vision of <sup>TM</sup> through a process of continuous improvement.



## OUR HSSE MISSION

To create a safe, secure and healthy work environment, preventing injury and ill health by:

- ✓ Integrating HSSE into business activities and processes
- ✓ Providing suitable and sufficient resources to deliver this policy
- ✓ Proactively addressing HSSE risks
- ✓ Creating ownership and responsibility at all levels
- ✓ Focusing on the prevention of injuries, illnesses and negative environmental impacts
- ✓ Meet or exceed compliance with legal and other requirements



## OUR HSSE EXPECTATIONS

We expect that each employee is committed to prevent all unsafe situations and unsafe behavior which can lead to illness, injuries or damage to the environment or company assets. We expect to support and promote HSSE by:

- ✓ Taking responsibility by being alert and work safely
- ✓ Immediately execution of corrective actions to eliminate risks
- ✓ Immediately reporting of unsafe conditions and acts
- ✓ Promoting safe working and intervene if someone else works unsafe
- ✓ Support incident investigation on request
- ✓ Giving proactive suggestions for improvement
- ✓ If in doubt whether a situation and/or behavior is safe, stop work and consult with your supervisor
- ✓ Reporting issues that are not listed above and can be seen as 'unsafe' immediately



## OUR LEADERSHIP RESPONSIBILITY

Our leaders are responsible to support and promote HSSE by:

- ✓ Providing a safe, secure and healthy work environment
- ✓ Set HSSE performance, goals and expectations
- ✓ Review HSSE progress in department meetings
- ✓ Immediately report, investigate and eliminate unsafe conditions and unsafe behavior
- ✓ Consulting with and involving employees in HSSE incidents and corrective actions
- ✓ Training employees
- ✓ On-time closure of corrective actions



## OUR MANAGEMENT COMMITMENT

- ✓ We consider all incidents as preventable: Goal Zero
- ✓ We strive to recognize and mitigate risks before an incident occurs
- ✓ Working safely is a condition of employment and we expect all employees to work safely