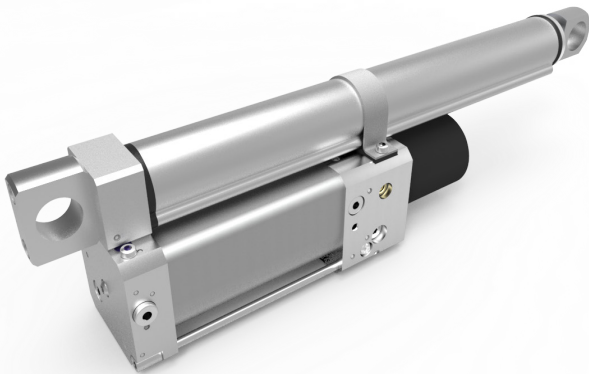


POWER-PACKER®

Power-Packer is your global trusted advisor of innovative, high quality integrated motion control and actuation for medical applications. We understand the critical needs of the market and offer innovative hydraulic solutions, whether electrical power is available or not. In the fast-paced world of health care, lives are on the line every second.

Medical equipment OEMs around the globe trust Power-Packer actuation systems in their operating tables, emergency stretchers, imaging equipment, scanner tables and more. Power-Packer's broad knowhow and continuous search for innovation guarantees you PROGRESS IN MOTION!





Best design

- Lightweight and compact unit <6 kg
- Robust design, without hoses
- Easy installation and operation
- Zero-maintenance

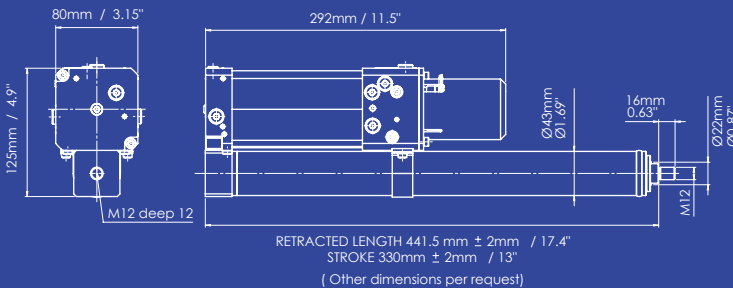
High performance

- Extreme power dense (14kN)
- Controllable velocity, independent of the load
- Fast, quite and smooth operation for paramedics and patient comfort
- Back-up option for manual operation



The EDU is an electro-hydraulic system with a powerful brushless motor, specially developed for the high-end medical market. The self-containing design is fully made from aluminum, making it light weight and compact. This high power-dense system makes it possible to fully control the acceleration and velocity even under the heaviest loads.

Customization and configuration allows the EDU to perfectly fit in applications from specialist care to bariatric solutions, supporting paramedics in their demanding job. A soft start-stop feature ensures comfort and safety. The EDU could be used in any application that requires precise adjustment at variable loads and velocities.



SPECIFICATIONS	
Stroke lengths:	Up to 500mm
Maximum dynamic push force:	14kN
Movement:	Continuously variable velocity in any direction
Cylinder:	Double acting
Unit weight:	<6Kg



P.O. Box 327 | 7570 AH
Edisonstraat 2 | 7575 AT
Oldenzaal | The Netherlands
T: +31 541 584 500
E: sales@power-packer.nl
I: www.power-packer.com

